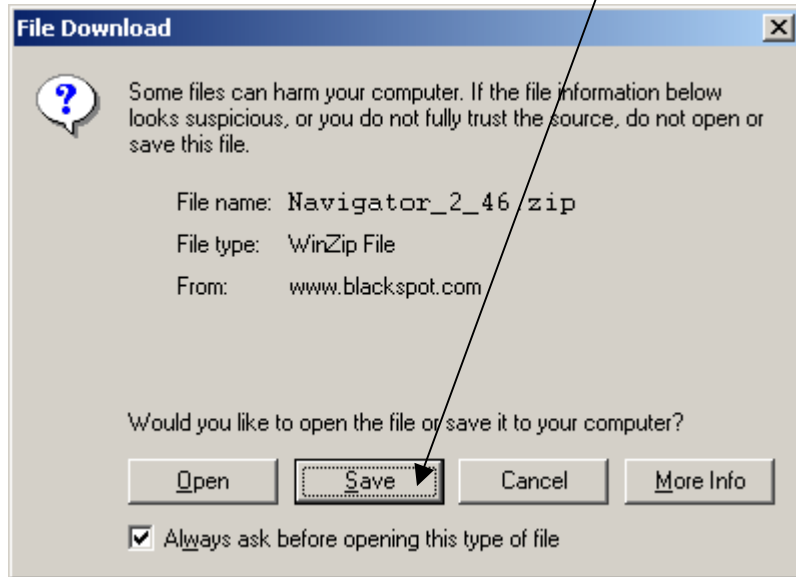


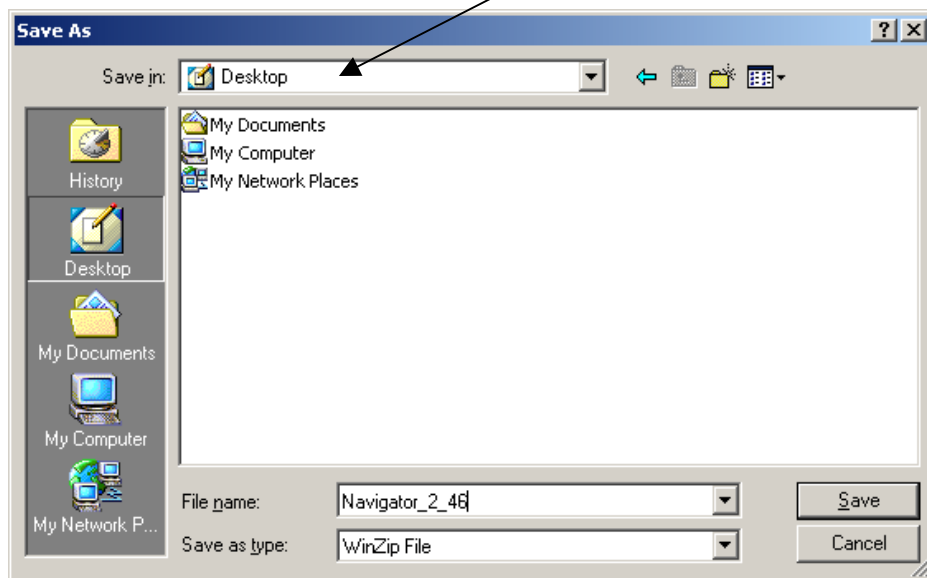
Customer support

HOW TO DOWNLOAD AND INSTALL THE ROAD ANGEL NAVIGATOR FUI UPGRADE PROGRAM – V 2.46

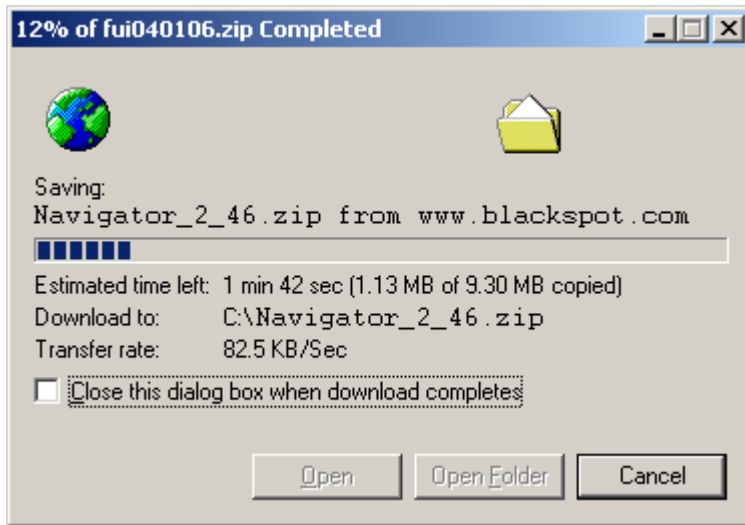
This box will automatically appear on the screen. Click on Save.



Make a note of location you are saving the software to. You will need to go to this location once you have finished downloading the software. Then click on Save



The software will then start downloading to the PC.



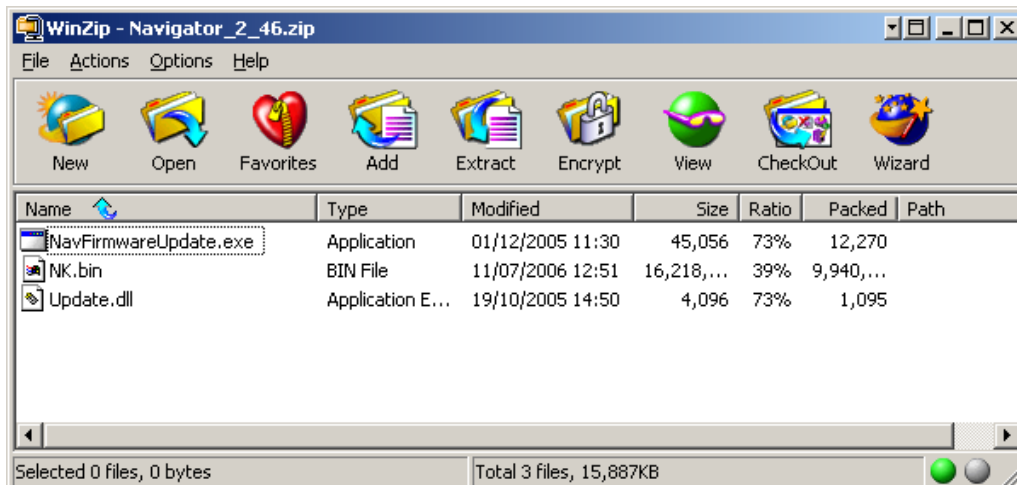
Once you have downloaded the Road Angel Navigator update software, double click on the icon and the installation will commence.

NOTE: You will require a copy of WinZip to be installed on your PC. If you do not have WinZip, you can download it by clicking [here. \[INSTERT LINK TO WINZIP DOWNLOADS WEBSITE. http://www.winzip.com/downse.html\]](http://www.winzip.com/downse.html)

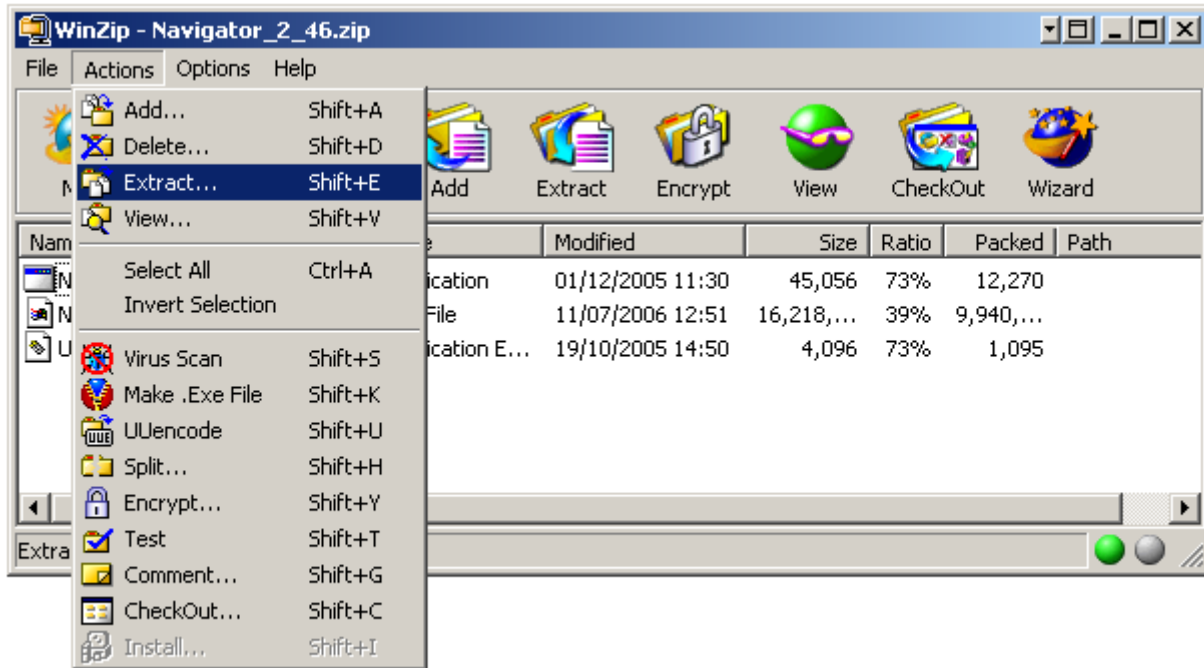


Navigator_2_46

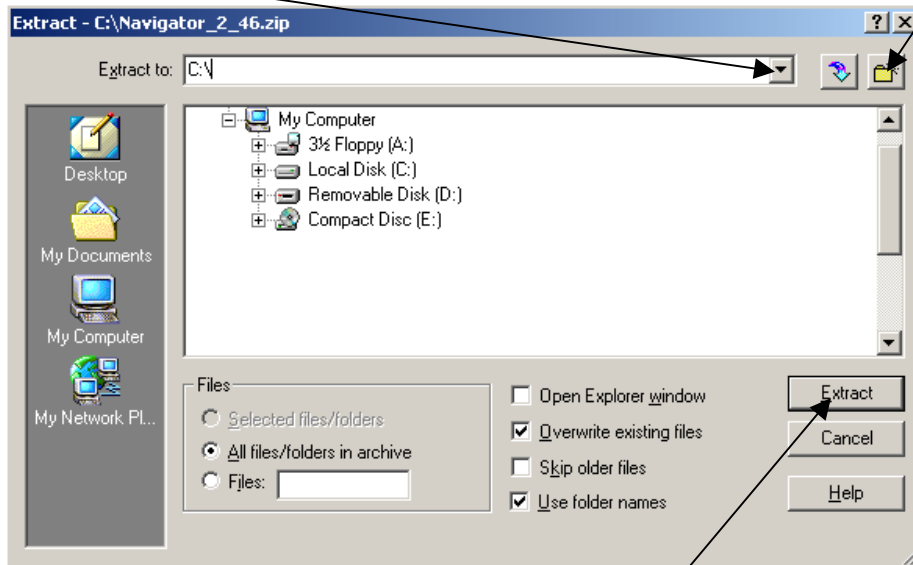
The software will automatically unzip and contains three files.



NOTE: All 3 files need to be extracted to the same location, do not select files individually. Select 'Actions' and the 'Extract...'

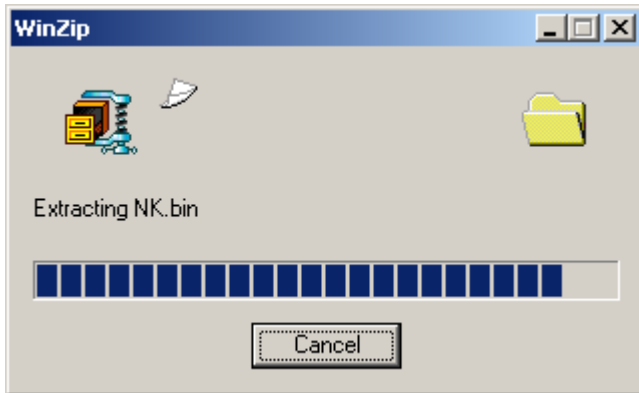


Select the folder that you wish to extract the files too. If you want to create a new folder, click here.

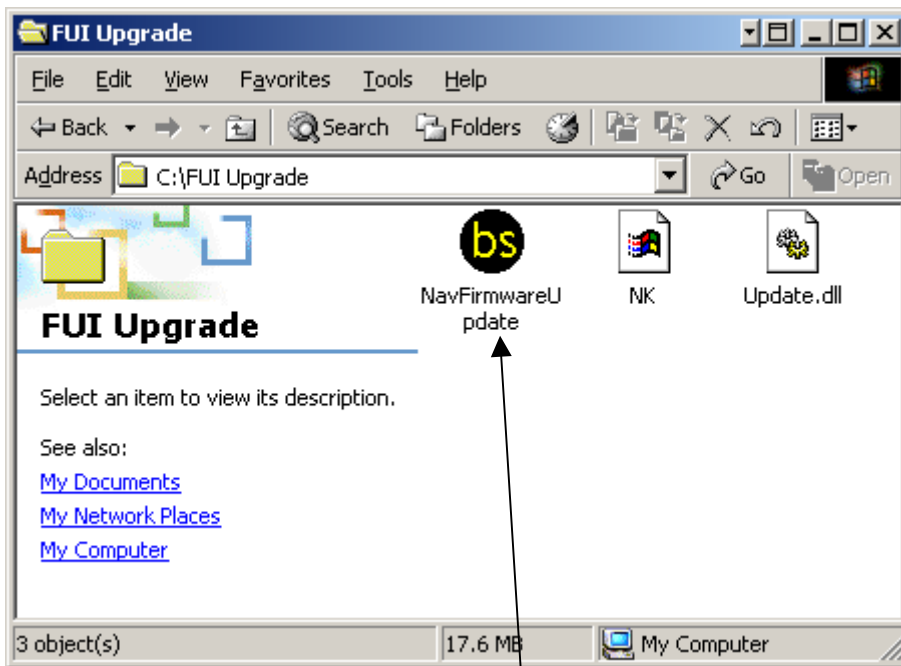


NOTE: You will need to go to the folder you have selected once you have extracted the files. Be sure to make a note of it for later. Once you have selected a location, click on 'Extract'

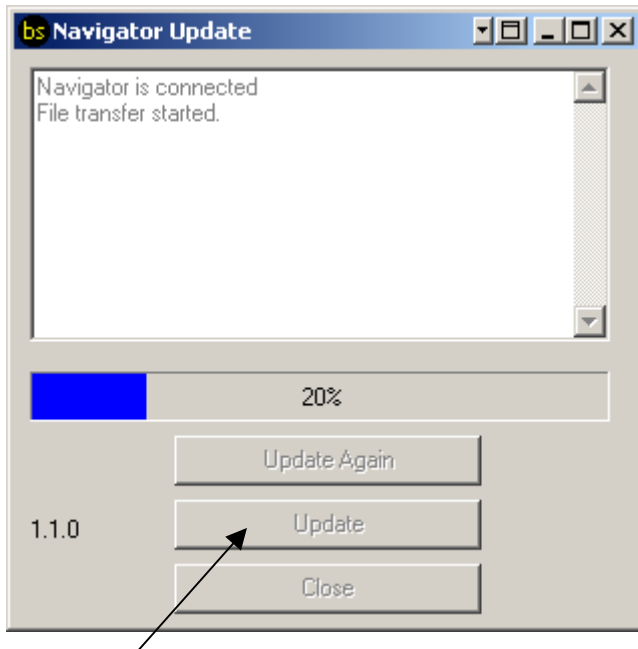
WinZip will then extract the files to the specified location, you can close winzip.



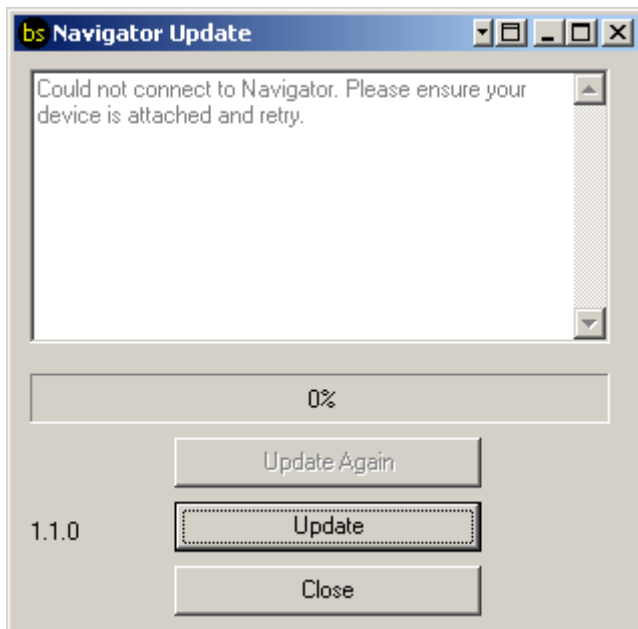
Connect Road Angel Navigator to the PC using the same process as when carrying out an update, Active-Sync will find the device. Now open the folder you extracted the files to earlier.

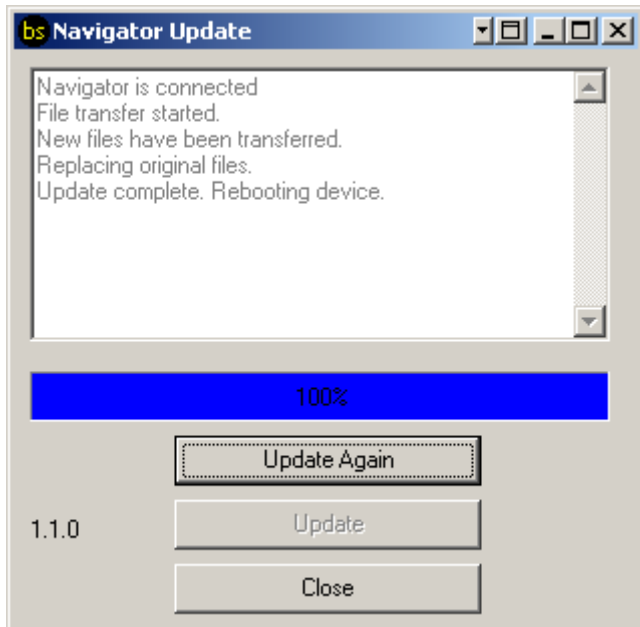


Then double-click on the 'Nav-FirmwareUpdate' icon.



Click on Update, the program will start automatically. If you receive the message below, check that the device is connected to the PC and has established a connection via Active-Sync.





Once the upgrade has been completed, Road Angel Navigator will automatically reboot.