

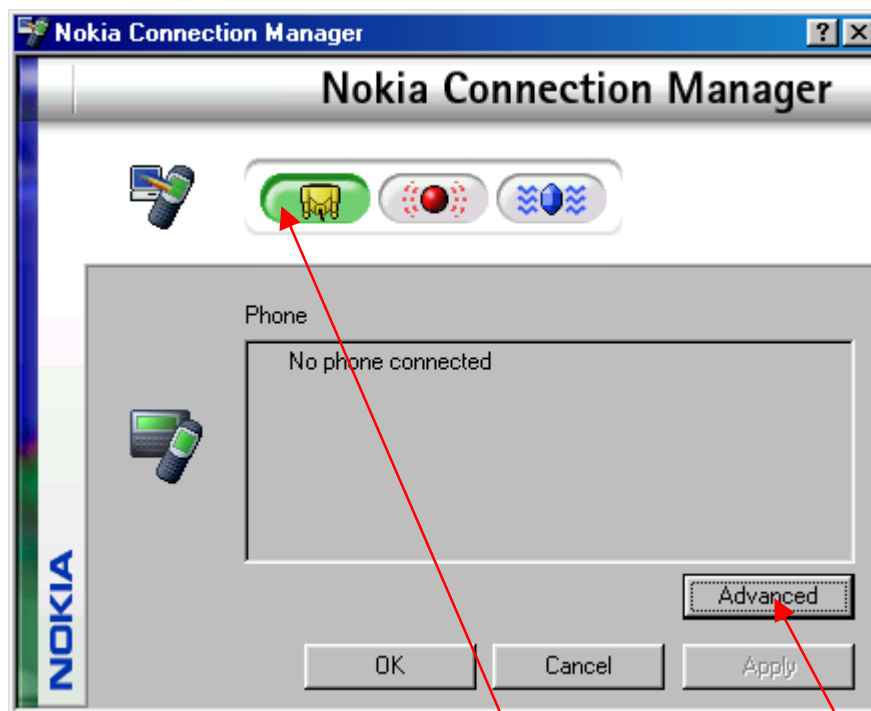
## HOW TO: Free up a COM port from Nokia Connection Manager

Step by step guide on how to free up a COM port that is being used by Nokia Connection Manager.

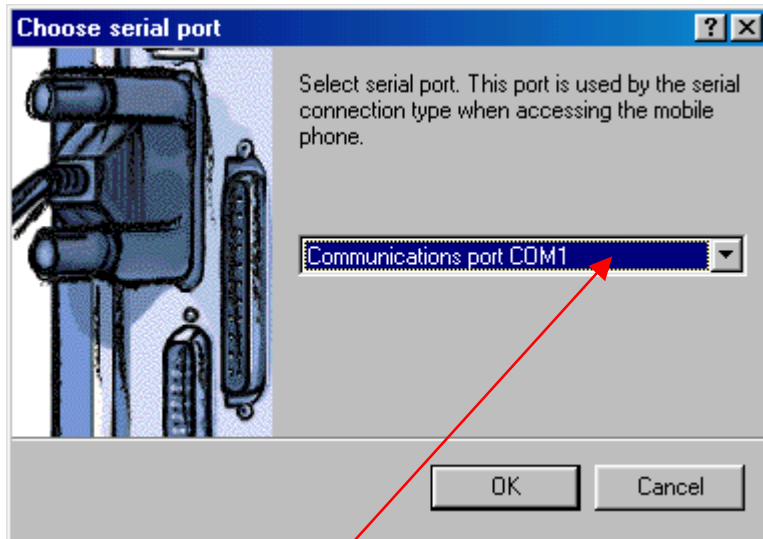
- In order for this procedure to work please ensure that the Road Angel software is not running. If the software is running, you will see a Road Angel icon in the Taskbar to the bottom right hand side of the screen. To close the software, right mouse click on the icon and select exit.



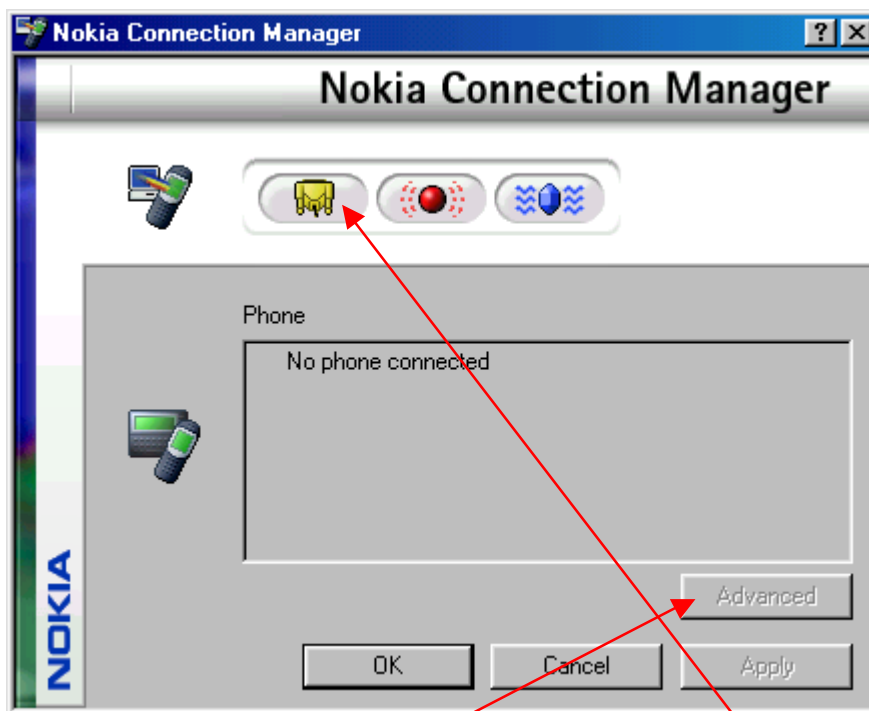
- Right click on the Nokia Connection Manager Icon; select 'Connection Manager' and this box will appear.



- Despite the fact that the status says 'No phone connected' the software still has hold of a COM port. This can be seen by the fact the 'Serial port connection' button is selected.
- You can see what COM port is selected by clicking on Advanced.



- This tells you that the 'Connection Manager' software has hold of COM port 1.
- To free up the port click OK to go back to the previous screen.



- Now click on the 'Serial port connection' button and it will go grey; the Advanced button will also grey out. Now select OK and the window will close. The COM port is now free, start the Road Angel software and select the relevant COM port.