

## How to check the version of Internet Explorer on your PC

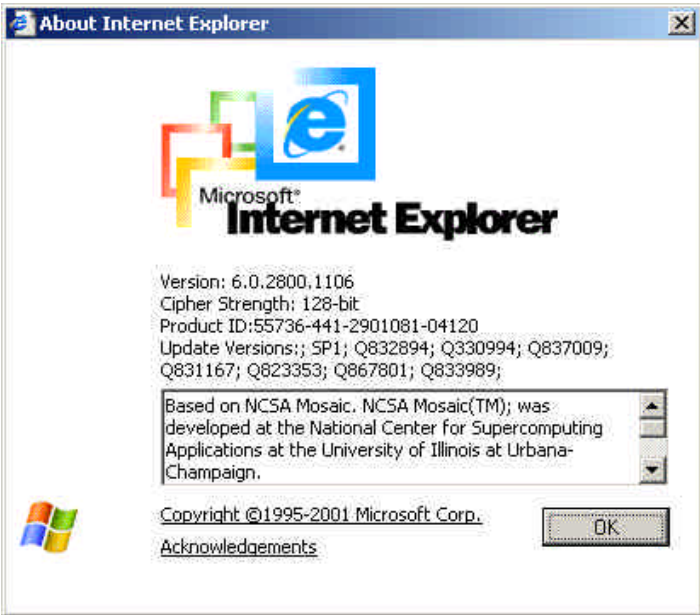
Open Internet Explorer either from the Start menu, or by double-clicking on the Internet Explorer icon on your main desktop.



Once the page has opened click on Help, and then click on About Internet Explorer.



This will open a window that tells us what version of Internet Explorer is being used by your PC. If the Version number is less than 5.5 you will need to install a later version of Internet Explorer. This can be done by visiting [www.microsoft.com](http://www.microsoft.com) and selecting Microsoft Update.



About Internet Explorer



Version: 6.0.2800.1106  
Cipher Strength: 128-bit  
Product ID:55736-441-2901081-04120  
Update Versions:; SP1; Q832894; Q330994; Q837009;  
Q831167; Q823353; Q867601; Q833989;

Based on NCSA Mosaic. NCSA Mosaic(TM); was developed at the National Center for Supercomputing Applications at the University of Illinois at Urbana-Champaign.



Copyright ©1995-2001 Microsoft Corp.  
[Acknowledgements](#)

OK